



Across-breed Genetic Evaluations in Ireland



Increasing the choice, Increasing the genetic gain

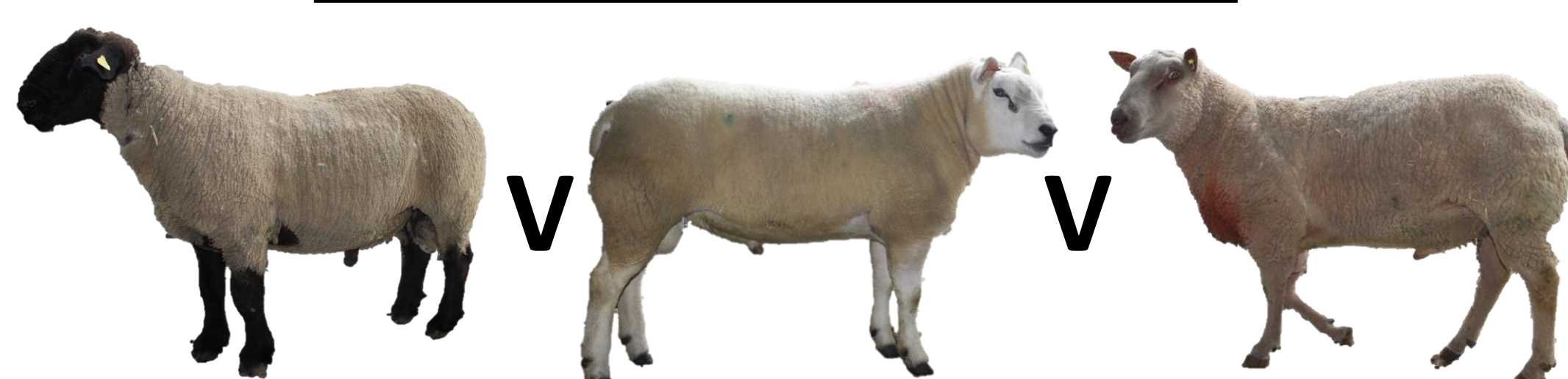
What.....

- Comparison of animals regardless of their breed
- Previous evaluations were only within breed
- New developments allow across-breed evaluation
- First national maternal across-breed evaluation in the Northern Hemisphere

Within breed evaluation

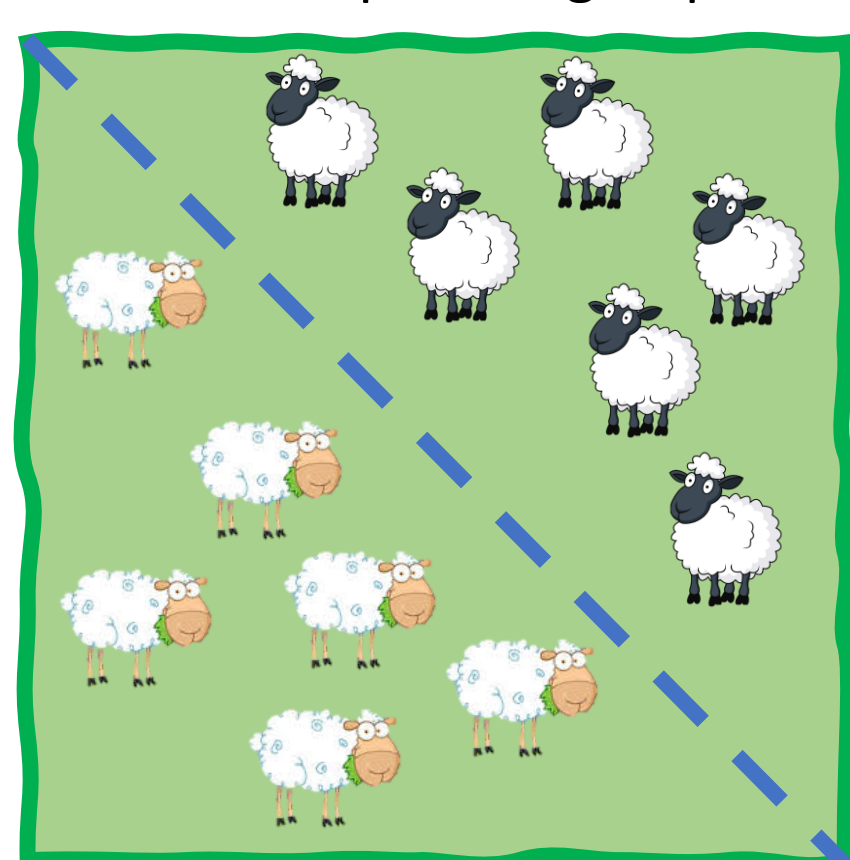


Across-breed evaluation

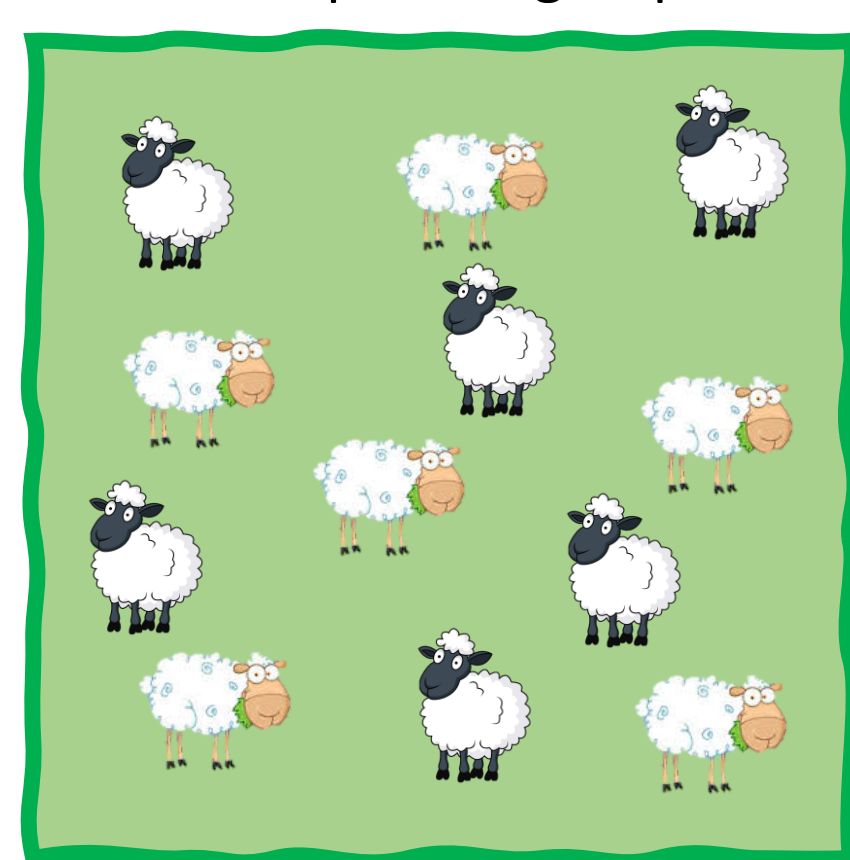


Advantage of an across-breed evaluation

Within breed Eval.
2 ram breeds =
2 comparison groups



Across-breed Eval.
2 ram breeds =
1 comparison group



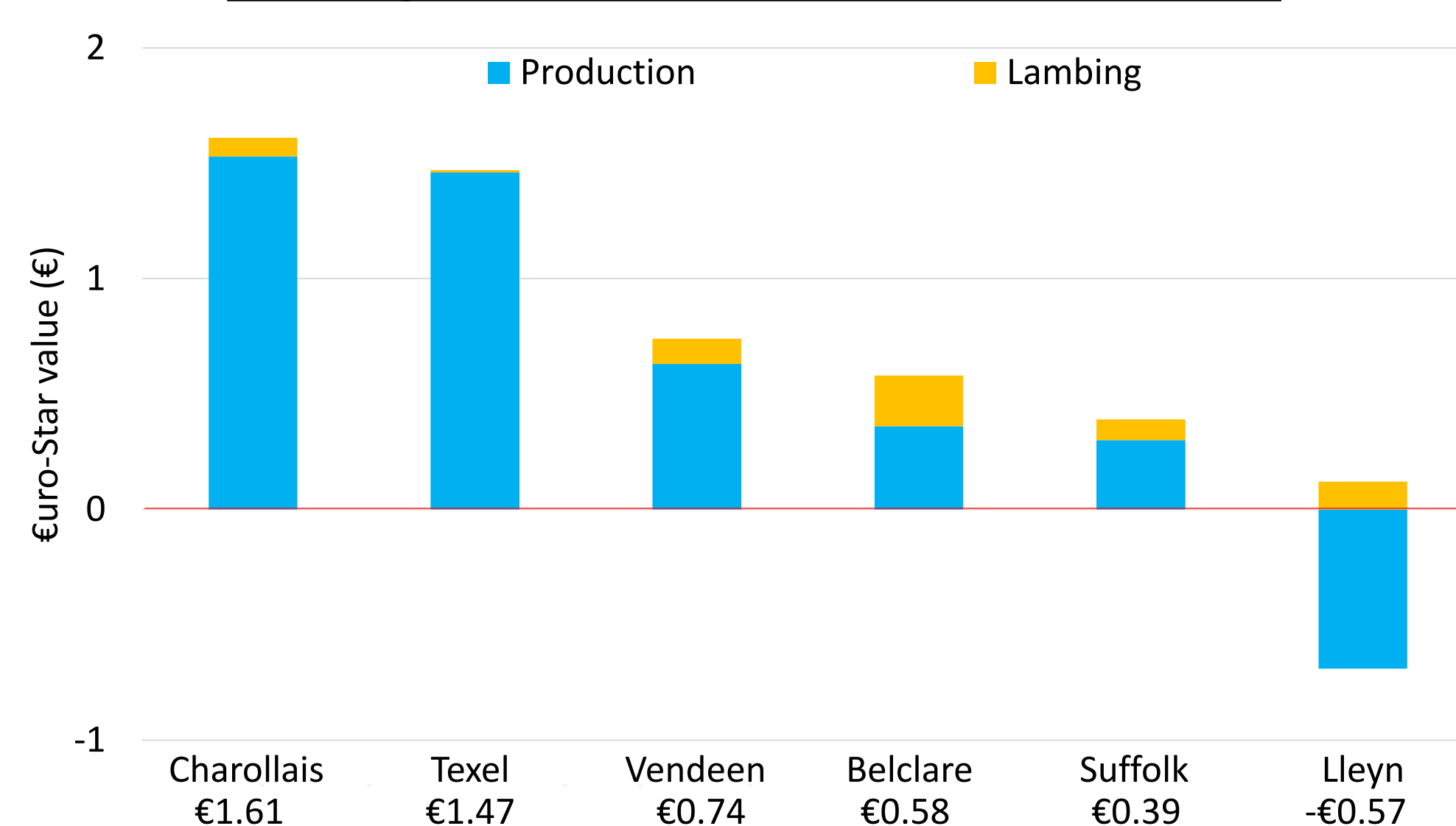
Why.....

- Sheep Ireland's aim is to drive genetic improvement
- Rank different breeds on the same index
- Compare different breeds within the same flock
- More accurate evaluation of crossbred animals

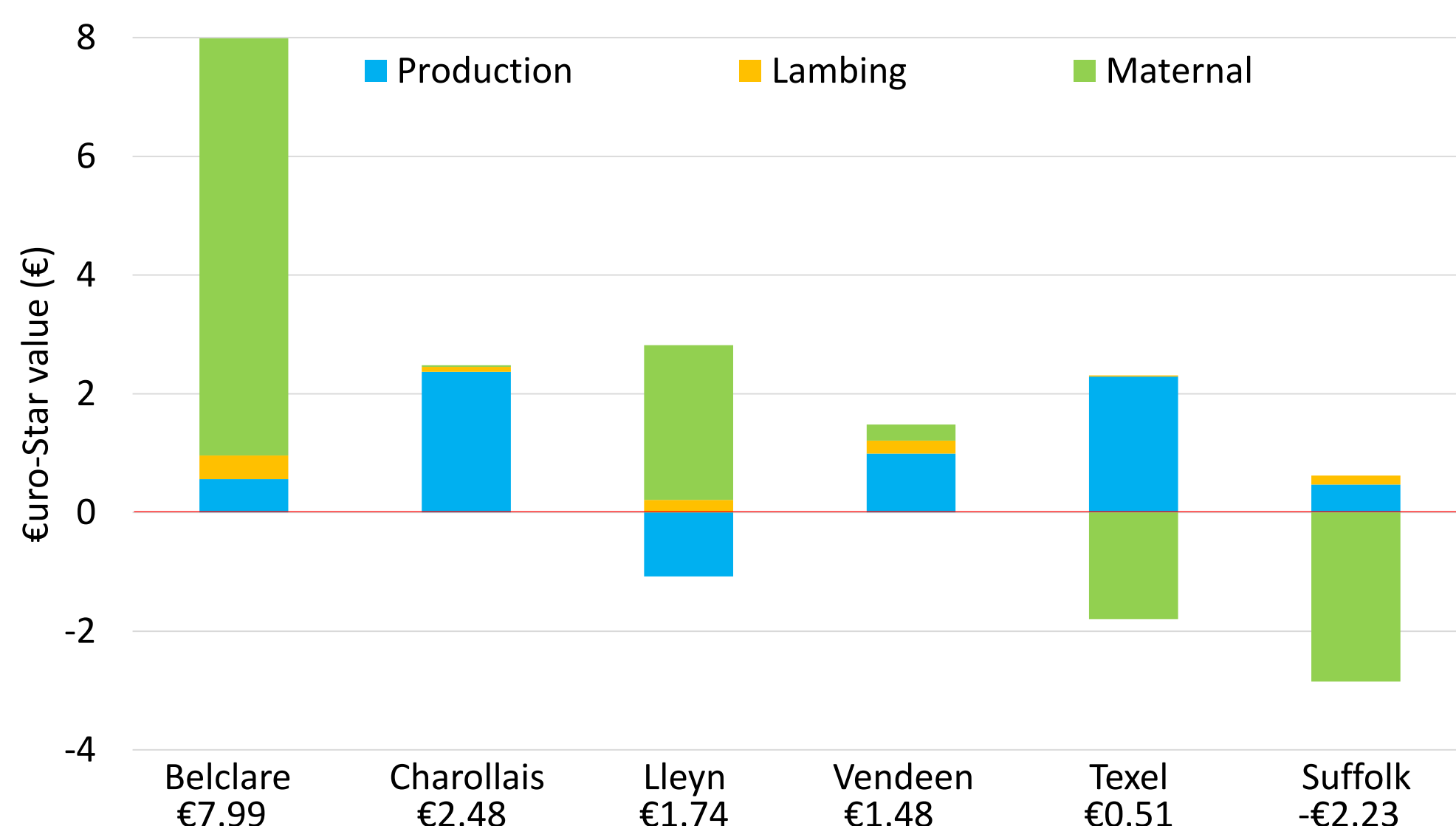
How.....

- Crossbred data collected from CPT and MALP flocks
- Animal breed composition added to evaluation
- Animals compared on all traits in the Replacement and Terminal Indexes
- Evaluation corrected for breed differences

Average across-breed Terminal Index



Average across-breed Replacement Index



Results & Conclusions.....

- More robust evaluation
- Improved evaluation accuracy (+4% Ter. , +3% Rep.)
- Euro-Star value within and across-breed
- Farmers make more informed breeding decisions