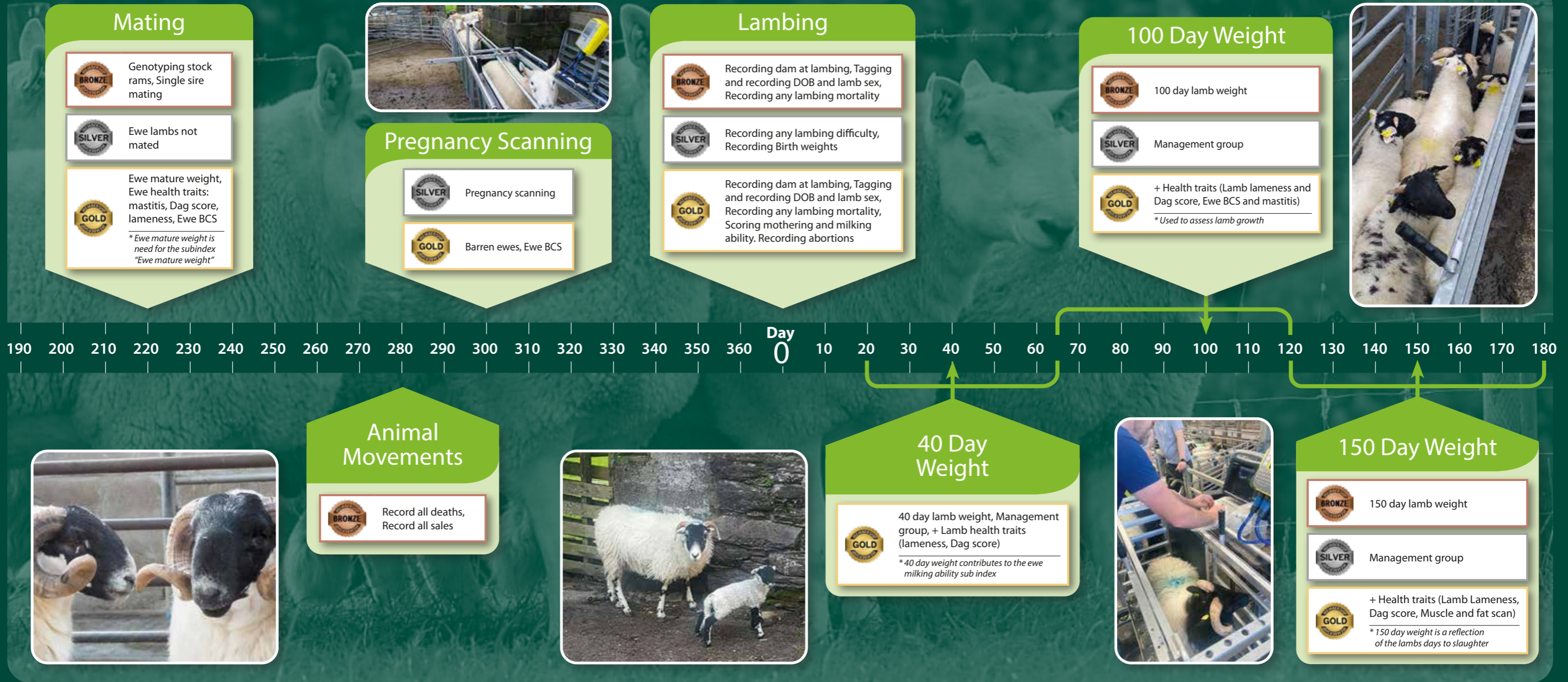


Hill LambPlus Recording Timeline



Rank	Mothering ability	Description
1	Very poor	Ewe has no interest in the lamb
2	Poor	Ewe stands well away and is slow to lick the lamb
3	Average	Ewe licks lamb and follows the lamb
4	Good	Ewe licks lamb, is protective and follows lamb closely
5	Very good	Very protective, licks lamb immediately, follows lamb very closely and bleats for her lamb

Rank	Lamb vigour	Description
1	Very poor	Not standing after 60 minutes
2	Poor	Standing within 60 minutes
3	Average	Standing within 30 minutes
4	Good	Standing within 10 minutes
5	Very good	Standing within 5 minutes

Weighing event	Possible age range
Birth weight	< 24 hours of age
40-day weight	20 – 65 days of age
100-day weight	66 – 120 days of age
150-day weight	121 – 180 days of age
Mature weight	200+ days of age

Standards
 <p>To achieve BRONZE standard you must complete all BRONZE level requirements.</p>
 <p>To achieve SILVER standard you must complete all BRONZE level requirements AND all SILVER level requirements.</p>
 <p>To achieve GOLD standard you must complete all BRONZE AND SILVER level requirements AND all GOLD level requirements.</p>

Rank	Lambing difficulty	Description
1	Unassisted	Ewe lambed down totally unassisted
2	Voluntary assistance	Assisted for convenience, if lambs' chances of survival were increased change to rank 3
3	Slight assistance	No adverse impact on the ewe or lambs, but the lambs' chances of survival were increased – (reverse presentation/leg back/ large lamb, etc...)
4	Significant assistance	Prolonged intervention by farmer/vet, and/or noticeable subsequent impact on ewe and/or lamb performance. Without intervention a dead ewe and/or lamb would have been a likely outcome

BCS	Description
1	Spinous processes are sharp, no fat cover and no muscle cover
2	Spinous processes less sharp, little fat and muscle cover
3	Spinous processes smooth, moderate fat and muscle cover
4	Spinous processes hard to detect, good fat and muscle cover
5	Fat cover is dense, muscle very full and spinous processes are not detectable

